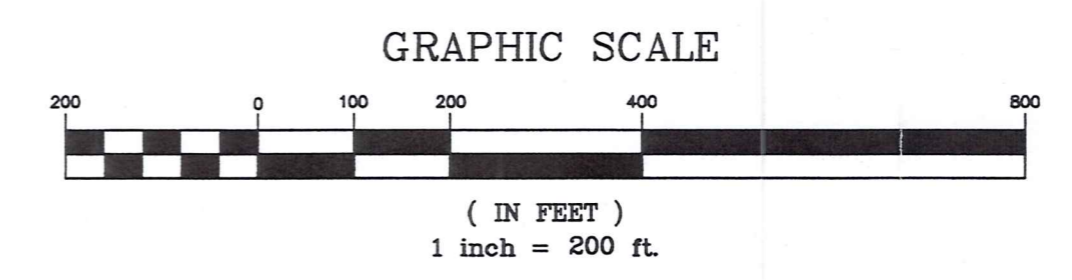


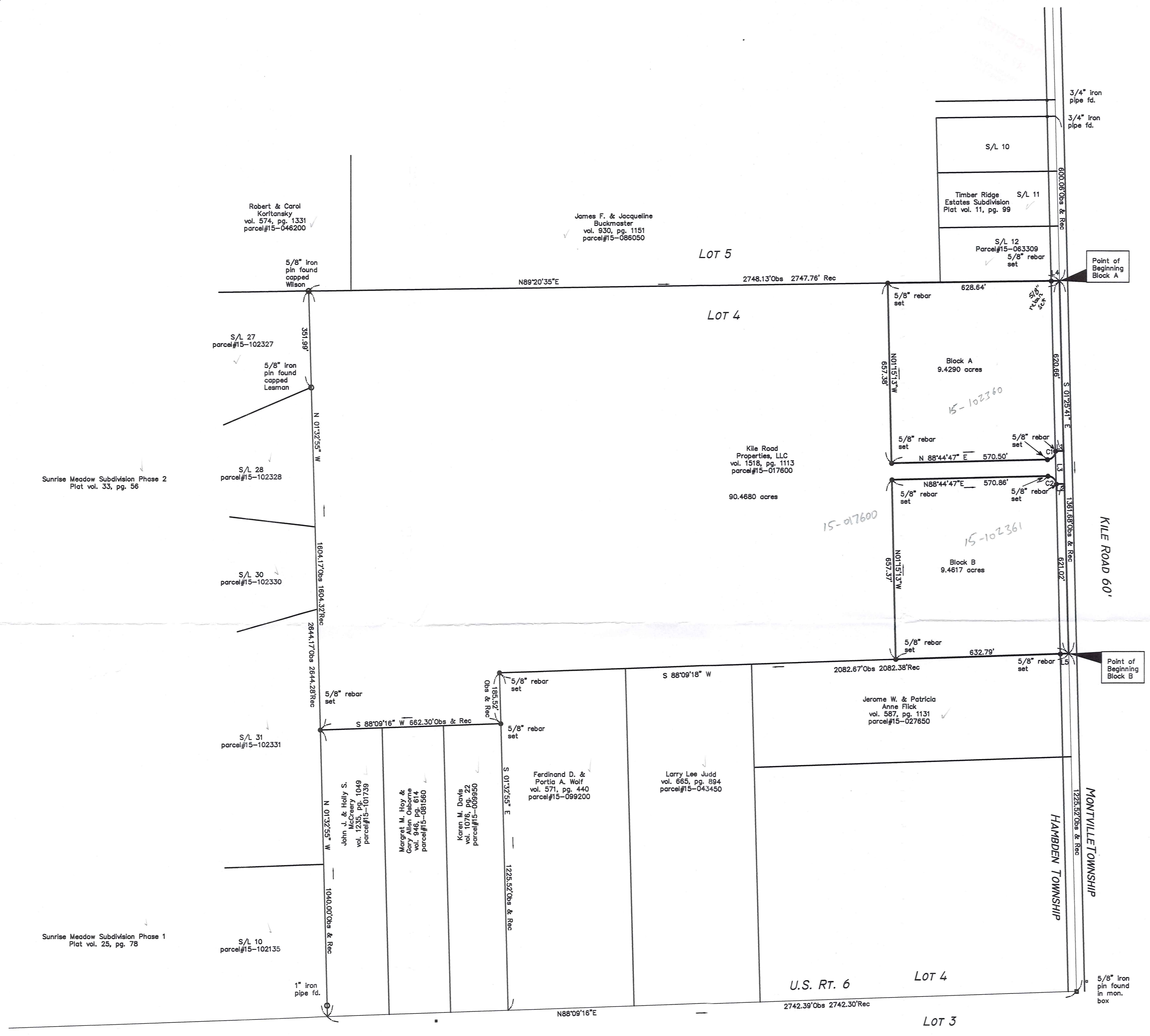


Bearings Grid North and based on State Plane NAD 1983 Ohio North Zone as established from the Geauga County Horizontal Control Station 1500.  
All 5/8" rebar set are 30" long capped Foresight Engineering Group, Inc.  
Aerial Photography as shown hereon is from the Geauga County GIS dated the year 2000.



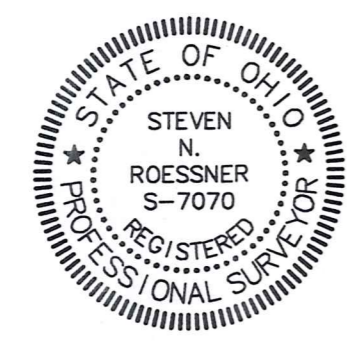
LINE TABLE		
LINE	LENGTH	BEARING
L1	30.00	N88°34'19"E
L2	30.00	N88°34'19"E
L3	120.00	N01°25'41"W
L4	30.00	S89°20'35"W
L5	30.00	S88°09'18"W

CURVE TABLE					
CURVE	Delta	Length	Radius	Tangent	Chord Bearing
C1	90°10'27"	47.22'	30.00'	30.09'	N43°39'33"E 42.49'
C2	89°49'33"	47.03'	30.00'	29.91'	N46°20'27"W 42.36'



This Plat represents a Survey which meets the minimum standards for a Boundary Survey in The State of Ohio as specified in the Administrative Code Chapter 4733-37 Surveyed in August and September, 2002 by Foresight Engineering Group, Inc. Under the supervision of Steven N. Roessner, P.S. #7070

*Steven N. Roessner* 9/20/02 Date  
Steven N. Roessner, P.S. #7070  
Foresight Engineering Group, Inc.



SURVEY PLAT & LEGAL DESCRIPTION  
APPROVED PER R.C. 315.251  
R.S. 9/23/02  
OFFICE OF THE  
GAUGA COUNTY ENGINEER

SCALE : Horiz. 1" = 200'  
Vert. None  
FILE NAME:  
i:\Som10201\Plat  
DATE : Sept. 19, 2002

**Kile Road Properties, LLC.**  
Lot 4, Bond Tract  
Hambden Twp. - Geauga County - Ohio  
Lot Split A & B



